

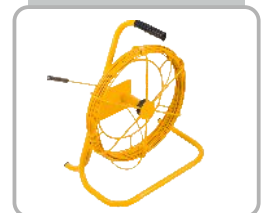


# LKZ-1000

## WIRES AND PIPE LOCATOR



Additional optional accessories:



Sonel S.A.  
ul. Wokulskiego 11  
58-100 Świdnica  
tel. +48 74 85 83 860  
fax +48 74 85 83 809

[export@sonel.pl](mailto:export@sonel.pl)  
[www.sonel.pl](http://www.sonel.pl)

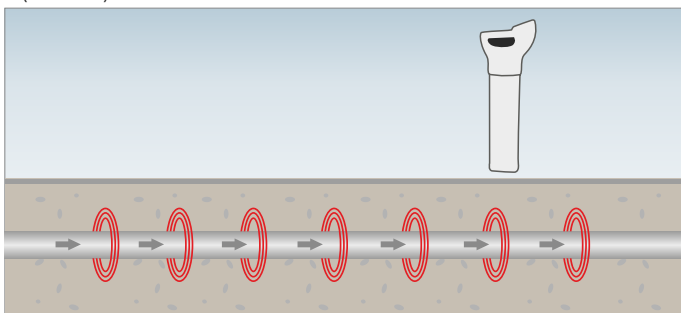
- Passive or active modes of tracing.
- Detection of underground live wires.
- Detection of underground wires with no voltage (radio mode).
- Detection of underground wires with no voltage using a transmitter (galvanised, inductive or clamp-based connection).
- Tracing metallic or non-conductive pipes using an additional probe.
- Tracing non-conductive pipelines using a “floating” probe.
- Tracing a determined cable.
- Determining the depth of a cable.

**Characteristic features:**

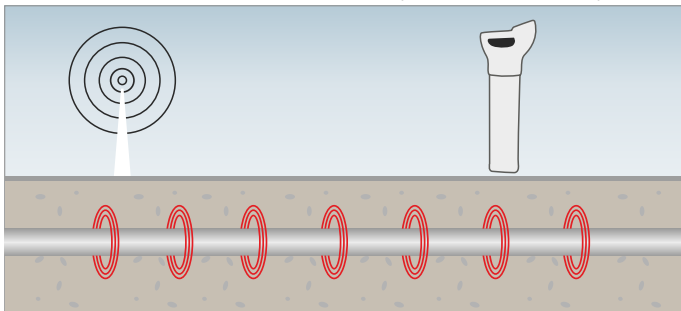
- backlit LCD with contrast (auto on-off),
- automatic adjustment of detection sensitivity,
- 5 operating modes,
- warning about shallowly located cables,
- measuring cable locations up to 3 m deep,
- determining the direction of a cable,
- sound signals to facilitate locating or tracing,
- adjustment of power and selection of frequencies for the transmitter.

**Operating modes:**

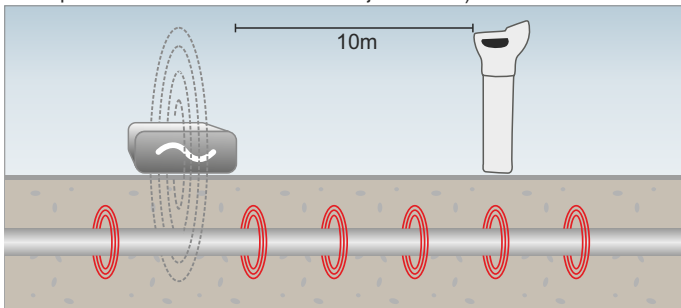
- passive, with 50 Hz or 60 Hz – enables to locate live wires and cables (POWER):



- passive RADIO (15-30 kHz) – enables a quick, non-selective locating operation for an underground structure (metallic installations):



- active (with transmitter) (8 kHz and 33 kHz), enables:
  - a locating operation using the inductive mode (all one has to do is to place the transmitter over the object traced):



**Electric security:**

- LKN-1000 transmitter's protection class acc. to PN-EN 60529 IP67 (closed cover)
- LKO-1000 tracer's protection class acc. to PN-EN 60529 IP54

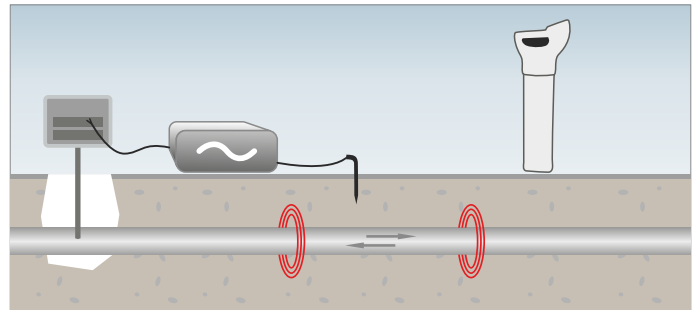
**Other technical data:**

- transmitter's power supply 4 x batteries LR14
- transmitter's dimensions 180 x 280 x 260 mm
- transmitter's weight <3 kg
- tracer's maximum range 4 m
- receiver's power supply 6 x battery Lr6
- receiver's dimensions 760 x 250 x 85 mm
- receiver's weight <2.9 kg

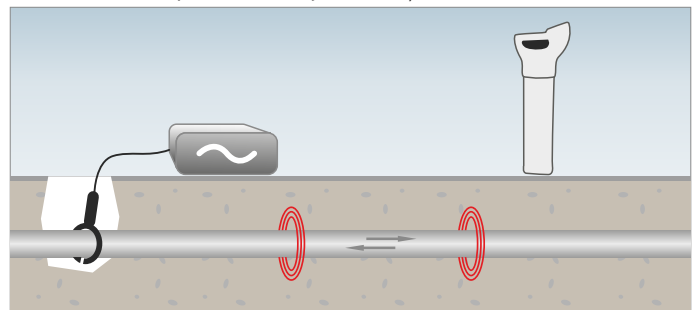
**Rated operational conditions:**

- operating temperature -20...+50 °C

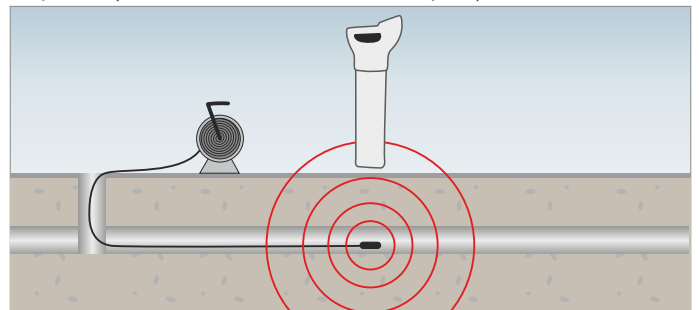
- a locating operation through connecting the transmitter directly to an object that is not live:



- a locating operation using transmission clamps (it is necessary to close the clamps over the object tested):



- a locating operation using a transmission wire or transmission probes (enables to locate non-metallic objects):



- a locating operation using a separating adapter (connecting the transmitter LKN-1000 directly to a 230 V socket).

**Standard accessories of LKZ-1000:**

- tracer LKO-1000
- transmitter LKN-1000
- case L5
- set of cables with "crocodile" clips
- earth contact probe
- operating manual
- batteries

WMPLLK01000  
WMPLLKN1000  
WAFUTL5  
WAPRZLKZ1000  
WASONG15

**Additional accessories of LKZ-1000:**

- transmission clamps
- transmission probe (8 kHz, 33 kHz) ("floating")
- reeled transmission wire to locate non-metallic installations:
  - 30 metres
  - 50 metres
  - 80 metres
- separating adapter (enables to connect the transmitter to a 230 V socket – for locating underground cables)

WACEGN2  
WASONNAD1  
WAPRZNAD30M  
WAPRZNAD50M  
WAPRZNAD80M  
WAADASEPPL